

PROJECT INFORMATION SESSION

# Pelham Bay Bridge Replacement Project

*National Environmental Policy Act (NEPA)  
Environmental Assessment (EA)*



# Agenda

- **Safety & Security Briefing**
- **Background**
- **Project Purpose, Goals, and Benefits**
- **Proposed Project**
- **Environment Impacts**
  - **Natural Resources**
  - **Noise and Vibration**
  - **Section 4(f) and Section 6(f)**
  - **Cultural Resources**
  - **Construction**
  - **Other Environmental Resources**
- **Timeline**
- **Next Steps / How to Comment**

# Safety & Security Briefing



## Emergency Preparedness

Our physical address is

Who will call 911, and who is their backup?

Who is CPR/AED qualified?

Know the location of emergency equipment.



## Evacuation

Communicate the need to evacuate.

Follow the Facility Emergency Plan (FEP).

Know your evacuation plan/route and muster point.

Assist those who may need help evacuating.

Wait for permission to re-enter the facility.



## Safety Reporting

Proactively identify and report unsafe conditions or behaviors.

Use AVSRS through the Safety page on All Aboard or download the Enablon Go mobile app.

Report all safety concerns.

Questions: contact [Systemsafety@amtrak.com](mailto:Systemsafety@amtrak.com)



## Health and Wellbeing

Take healthy actions:

Physical activity

Healthy nutrition

Adequate sleep

Mental well-being

Stay up to date with preventive services.

Take time to refresh and recharge.



## Security

If You See Something, Say Something®.  
Call 800-331-0008 or text 27311.

Active Shooter:  
Run, Hide, Fight.

Always be aware of surroundings.

Display and verify proper ID on Amtrak property.



## Cybersecurity

Pay attention to phishing traps in emails.

Don't click on links or attachments from unknown sources.

Report all suspicious email and cyber incidents to the Amtrak Service Desk:

800-772-4357 or [AmtrakServiceDesk@amtrak.com](mailto:AmtrakServiceDesk@amtrak.com)

# Background / Context

## LOCATION

Spans the Hutchinson River in the Bronx, between Co-op City and Pelham Bay Park

## STRUCTURE

Two-track bridge with a movable span

## HISTORY

Built in 1907

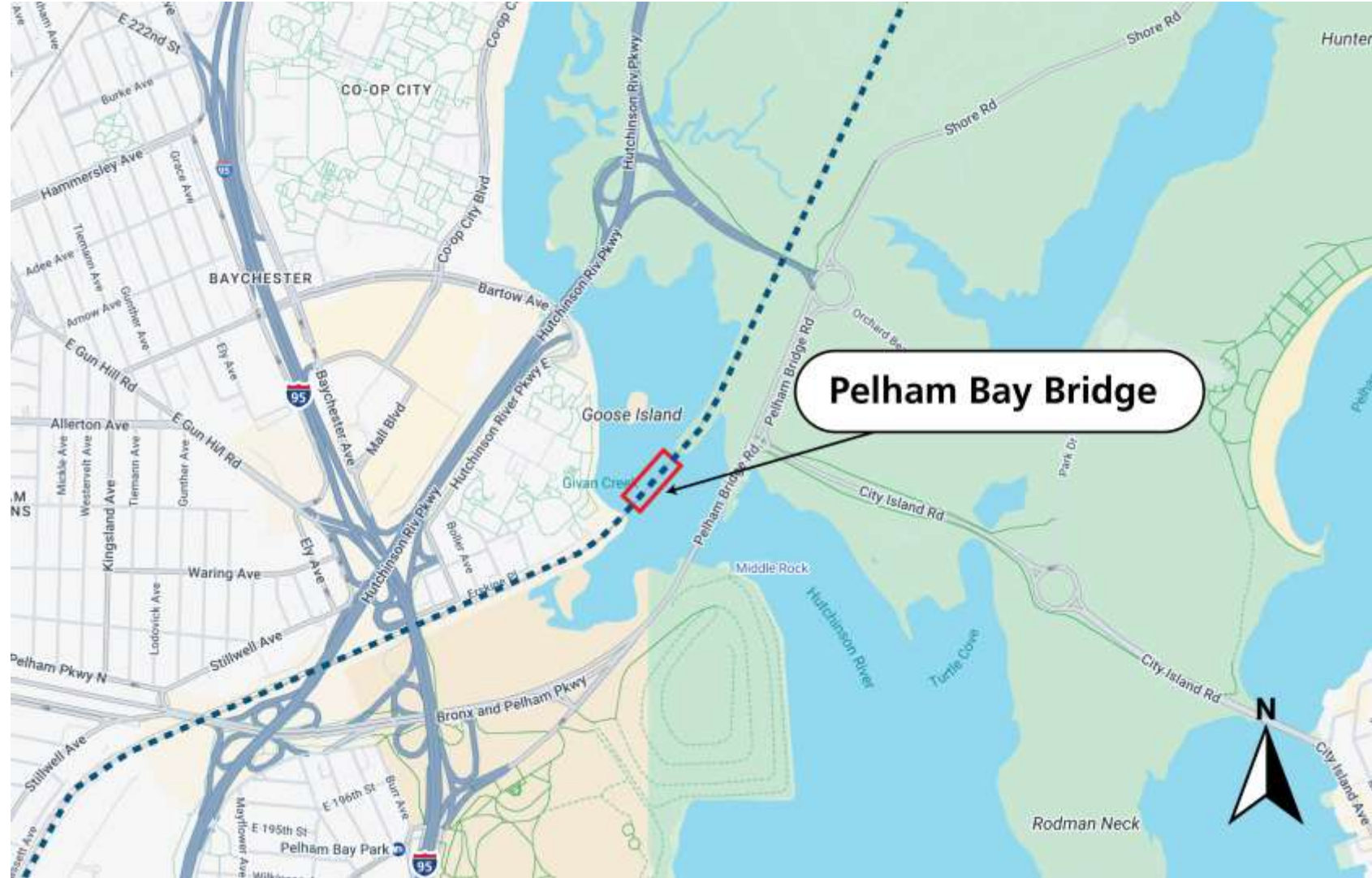
## RAIL LINE

Part of the Hell Gate Line on Amtrak's Northeast Corridor

## USAGE

Serves both passenger and freight trains

- 51 *Northeast Regional* and *Acela* trains per day (60 future)
- 102 Metro-North Trains per day (future)
- 2 CSX freight trains per week





# Project Purpose, Goals, and Benefits

The purpose of the Pelham Bay Bridge Replacement Project is to improve passenger rail service reliability, resiliency, and level of service; to improve the efficiency of bridge operations and maintenance; to address the geometric deficiencies in the track alignment; and to ensure continued navigation along the Hutchinson River.

## OPERATIONAL RELIABILITY

- *The 118-year-old bridge is beyond its useful life, causing frequent delays.*
- *Low clearance requires twice-daily openings, disrupting rail traffic.*

## TRAVEL SPEEDS

- *Track geometry limits Amtrak and future Metro-North speeds to 45 mph.*
- *The bridge's bottleneck and marine traffic slow passenger rail trips.*
- *Penn Station Access project will add 102 Metro-North trains, increasing potential delays.*

## MARITIME NAVIGATION AND SAFETY

- *The narrow, low navigation channel (66'-9" wide, 8' clearance) restricts maritime traffic.*
- *Frequent openings delay rail and marine movement.*
- *Limited space leads to costly bridge fender collisions.*



# Project Goals

- ▶ **Improve Reliability:**  
Enhance passenger rail service reliability, resiliency, and overall level of service.
- ▶ **Increase Efficiency:**  
Streamline bridge operations and reduce maintenance costs.
- ▶ **Boost Speed:**  
Allow Amtrak and Metro-North trains to operate at higher speeds.
- ▶ **Reduce Delays:**  
Cut train delays due to approximately 70% fewer bridge openings.
- ▶ **Fix Track Alignment:**  
Address geometric deficiencies in the rail alignment for better performance.
- ▶ **Enhance Navigation:**  
Widen the channel to reduce fender collisions and improve maritime traffic flow.





# Proposed Project

The Pelham Bay Bridge Replacement Project will replace the existing bridge with a new, modernized two-track mid-level movable bridge located directly south of the existing bridge.

## KEY FEATURES

- ▶ New two track movable bridge
- ▶ New fender system
- ▶ Increased passenger train speeds from 45 mph to 70 mph
- ▶ Improved maritime clearances:
  - 35-foot vertical clearance when closed (*unlimited when open*)
  - 100-foot horizontal clearance

## REMOVAL OF EXISTING STRUCTURES

- ▶ The current bridge will be removed after construction.
- ▶ Transmission towers will also be removed, improving the overall view.

## CONNECTIVITY ENHANCEMENTS

- ▶ Supports Metro-North trains coming into New York Penn Station on the west side of Manhattan for the first time ever.



# Environmental Impacts



# Natural Resources



## WETLANDS

Permanent impact to 1.0 acre of regulated vegetated wetlands.



## ESSENTIAL FISH HABITAT

Permanent impact to 1.52 acres of designated habitat.



## COASTAL ZONE

Impacts to New York State and New York City coastal zones but aligned with local coastal management policies.



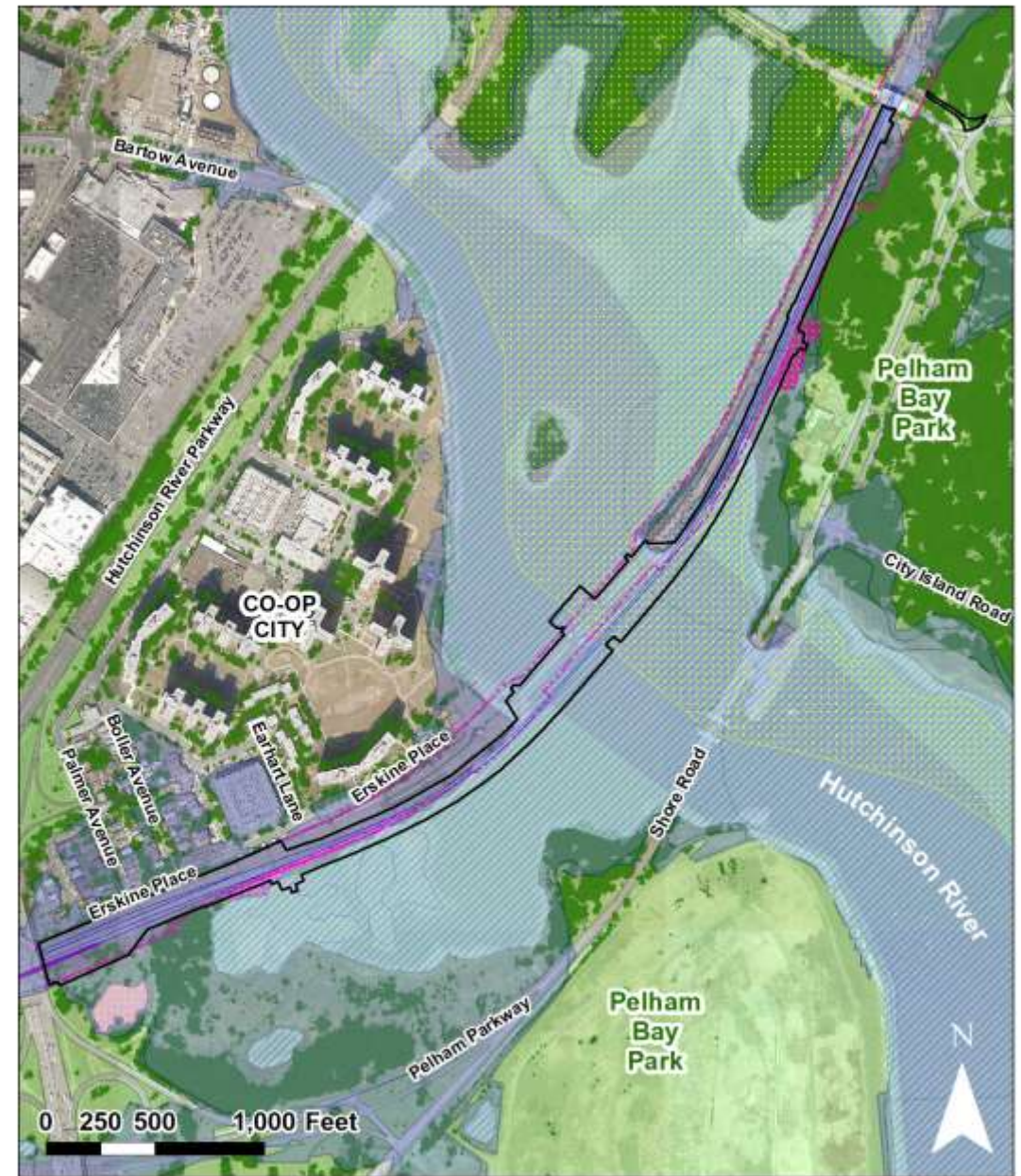
## FLOODPLAINS

- ▶ Permanent impact to 1.9 acres of 100-year floodplain.
- ▶ Temporary impact to 12 acres, but removal of existing bridge infrastructure will help offset long-term effects.



## MITIGATION

Amtrak will implement in-kind mitigation or mitigation banking to compensate for impacts on wetlands, tidal mudflats, and other aquatic habitats, finalized during the project's design and permitting phase.



Note: The entire area shown is within the New York City Coastal Zone Boundary

# Noise and Vibration

## ANALYSIS

Noise and vibration analysis based on Federal Transit Administration guidelines (Transit Noise and Vibration Impact Assessment Manual, Sept. 2018).

## NOISE-SENSITIVE AREAS

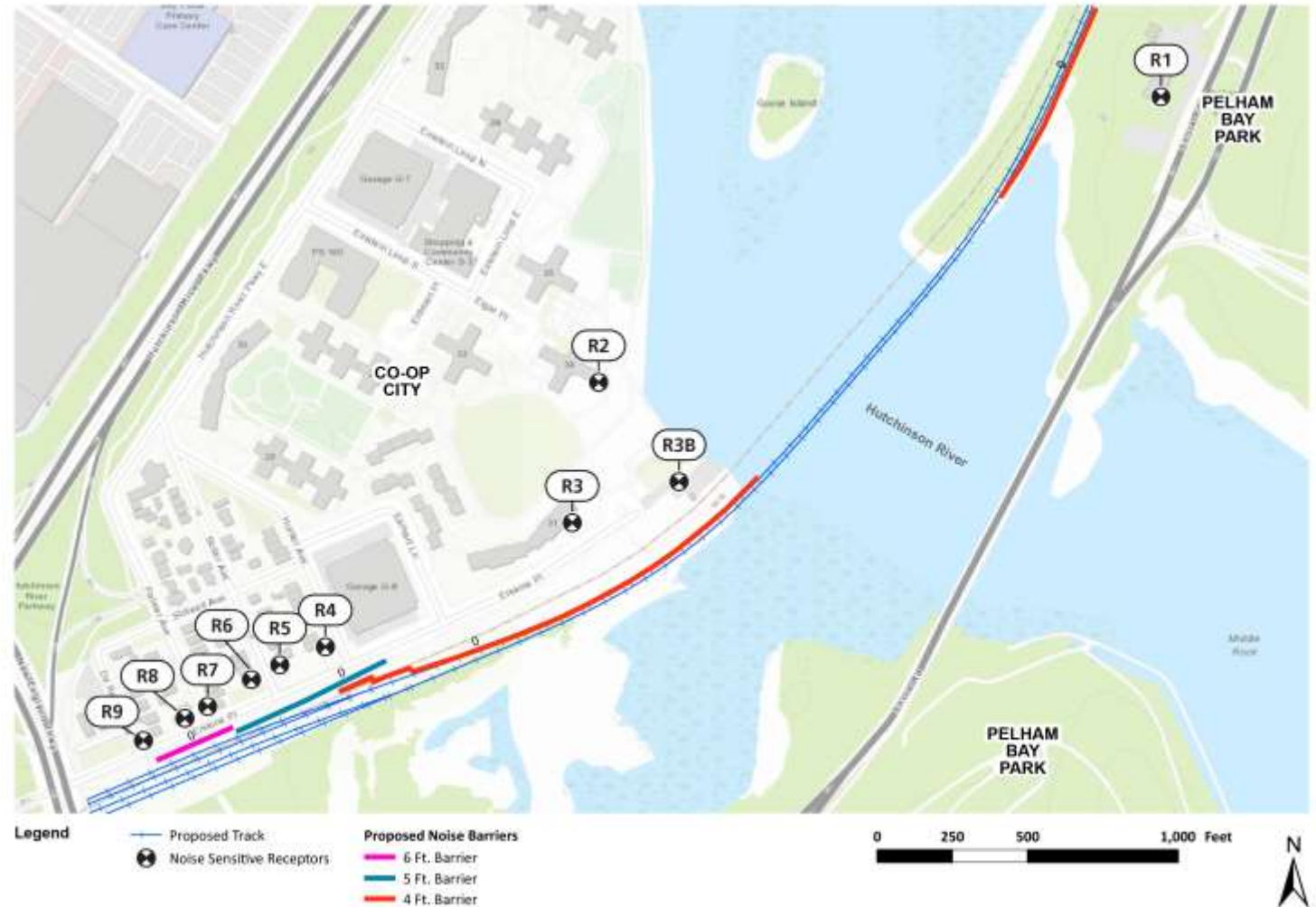
Amtrak identified receptors at Co-op City and Bronx Equestrian Center (identified in the map to the right).

## FUTURE NOISE MODELING

Assessed impact of new bridge alignment and future operations (Amtrak, Metro-North, CSX) and identified potential future impacts.

## IMPACTS

- ▶ With proposed noise barriers (four noise walls totaling 3,950 feet), noise levels at all receptors will be reduced from existing conditions.
- ▶ Per the FTA criteria, moderate noise impacts would remain at some residential areas in Co-op City (labeled R1, R2, R9 on the map below).
- ▶ No vibration impacts identified.
- ▶ Temporary increases in noise during construction would occur.

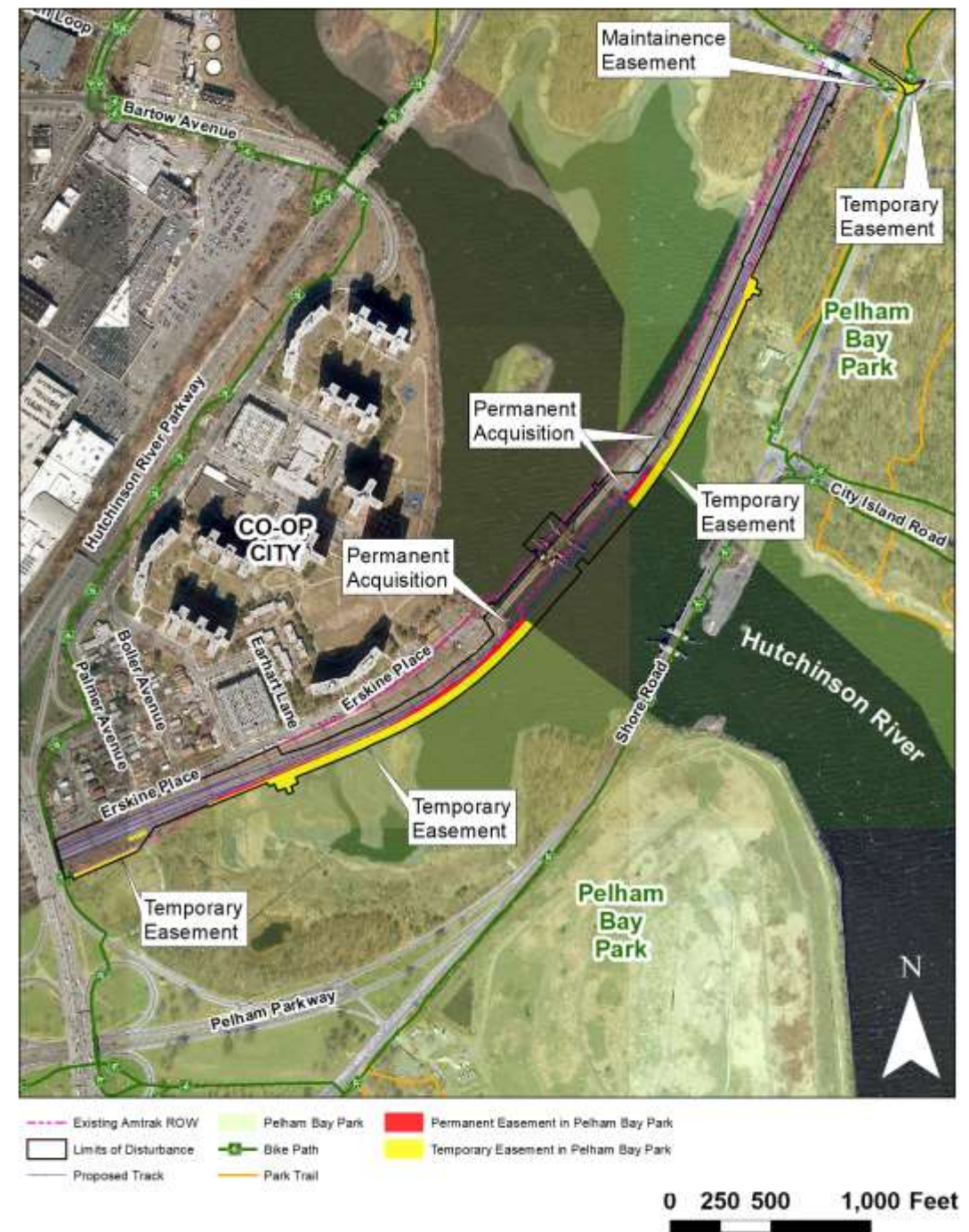




# Pelham Bay Park/Section 4(f)

## PELHAM BAY PARK OVERVIEW

- **Size:**  
2,772 acres – NYC's largest park.
- **Amenities:**  
Includes hiking trails, bridle paths, protected natural areas, Bronx Equestrian Center, Orchard Beach, and two golf courses.
- **Management:**  
Owned and managed by NYC Department of Parks and Recreation (NYC Parks).



# Pelham Bay Park/Section 4(f)

## Section 4(f)

### PROTECTION OF PUBLIC LANDS



#### Purpose

Safeguards parks, recreation areas, wildlife refuges, and historic sites from transportation projects.



#### Land Impact

- Permanent acquisition of **0.23 acres** of parkland.
- Maintenance easement of **0.37 acres**
- Temporary easement of **3.4 acres**
- Total of **4.01 acres** affected.



#### Construction Impacts

- Work will primarily affect **undeveloped natural areas** near Amtrak's right-of-way.
- Park roads will be used for construction access.
- Public access to trails, paths, and other amenities **will be maintained** with safety measures.

### MITIGATION & SAFETY MEASURES

#### ▶ Restoration Commitment:

Amtrak will fully restore all temporary construction zones within Pelham Bay Park, ensuring the land is returned to its original state.

#### ▶ Traffic Management Plan:

We will develop a comprehensive plan to minimize disruptions to park roads and trails, keeping public access open and safe throughout construction.

#### ▶ Tree Protection & Replacement:

To protect the park's natural environment, we will use protective matting for tree root zones and fully comply with tree replacement laws for any necessary removals.

#### ▶ Public Safety Commitment:

Every park trail, path, roadway, and amenity will remain open during construction, with proactive safety measures in place to protect visitors.

#### ▶ De Minimis Impact Finding:

Amtrak is actively working with FRA to ensure that project impacts do not adversely affect the park's features, attributes, or activities.



# Pelham Bay Park/Section 6(f)

## Section 6(f)

### Land and Water Conservation Fund (LWCF)



#### Purpose

Ensures lands acquired or developed with LWCF funds remain for **public outdoor recreation**.



#### Impact

4.01 acres of LWCF-funded Pelham Bay Park affected.



#### Requirements

- A **Section 6(f) conversion** is needed to replace lost parkland.
- Replacement property must be of equal **fair market value** and **usefulness**.



#### Coordination

- Amtrak is working with NYC Parks to find suitable replacement land per **Section 6(f) requirements**.



# Cultural Resources

## SECTION 106 FINDINGS & HISTORIC PROPERTY IMPACTS

### ADVERSE EFFECT DETERMINATION

Federal Railroad Administration (FRA) found an **Adverse Effect** for the Project on **June 12, 2024**, with NY SHPO concurrence on July 12, 2024.

### HISTORIC PROPERTIES IDENTIFIED

Name	Status	Determination
Amtrak Pelham Bay Railroad Bascule Bridge	NRHP Eligible for Criteria A* and C**	Adverse Effect
Pelham Bay Park Historic District	NRHP Eligible for Criteria A and C	No Adverse Effect (with conditions)
Shore Road Bridge (aka Pelham Bay Bridge) BIN 2240200	NRHP Eligible for Criterion C	No Adverse Effect
Co-op City Historic District	NRHP Eligible for Criteria A and C	No Adverse Effect

*\*Criterion A. History      \*\*Criterion C. Architecture - Engineering*

# Cultural Resources

## CONSULTING PARTIES

NY SHPO, the United States Army Corps of Engineers (USACE), the United States Coast Guard (USCG), the NYC Landmarks Preservation Commission, and the Delaware Nation.

### *Section 106 of the National Historic Preservation Act (NHPA)*

- ▶ **Purpose:**  
Requires federal agencies to identify and assess the impact of their actions on historic properties.
- ▶ **Public Involvement:**  
Agencies must consider public views and concerns when making final project decisions.
- ▶ **Definition of Historic Properties:**  
Includes districts, sites, buildings, structures, or objects that are listed or eligible for listing in the National Register of Historic Places (NRHP).
- ▶ **Oversight:**  
Managed by the New York State Historic Preservation Office (SHPO).
- ▶ **Role of the SHPO:**  
The State Historic Preservation Officer (SHPO) reflects the interests of the State and its citizens in the preservation of their cultural heritage.



# Cultural Resources

## MEMORANDUM OF AGREEMENT (MOA) & PRESERVATION COMMITMENTS

### AGREEMENT EXECUTED

The Federal Railroad Administration (FRA), Amtrak, and the New York State Historic Preservation Office (SHPO) signed a **Section 106 MOA on March 21, 2025** to address the impact on the historic Amtrak Pelham Bay Bridge.

### HISTORIC PRESERVATION MITIGATION

- ▶ **Documenting the Bridge:**  
Conduct **Historic American Engineering Record (HAER) Level II** recordation to preserve historical information.
- ▶ **Public Education:**  
Create an **illustrated pamphlet** detailing the bridge's history and significance in railroad electrification.
- ▶ **Archaeological Assessment:**  
Complete **geotechnical borings** to evaluate potential archaeological sensitivity before construction.
- ▶ **Noise Protection:**  
Build a **noise barrier** to reduce construction impact on the Bronx Equestrian Center.
- ▶ **Environmental Restoration:**  
**Replant vegetation** in areas affected within the Pelham Bay Park Historic District.
- ▶ **Construction Best Practices:**  
Implement **noise reduction strategies** to minimize disruption during construction.



# Construction Impacts

## CONSTRUCTION OVERVIEW & TIMELINE

Estimated to take **5 years**, with early work beginning in **2029**.



### TRANSPORTATION & TRAFFIC IMPACTS

- ▶ Temporary rise in vehicle traffic; minimal effect on the navigation channel.

#### Mitigation:

Amtrak will use NYCDOT-designated truck routes to reduce disruptions.



### TERRESTRIAL RESOURCES & WILDLIFE PROTECTION

- ▶ **Impact:** 1.1 acres of vegetation

#### Mitigation:

- Amtrak will replant affected areas post-construction.
- Protective matting for tree critical root zones and wetlands during construction.
- Precautions will be taken if work occurs near an active osprey nest.



### NOISE & AIR QUALITY

- ▶ Construction noise stays within FTA thresholds.
- ▶ Air quality impacts remain below federal limits.



# Construction Impacts

## CONSTRUCTION OVERVIEW & TIMELINE

Estimated to take **5 years**, with early work beginning in **2029**.



### WETLANDS & AQUATIC HABITAT

- ▶ **Wetlands:** Temporary impact to 2.5 acres of tidal wetlands.

#### **Mitigation:**

Amtrak will restore the area by replanting native salt marsh vegetation.

- ▶ **Essential Fish Habitat:** Temporary impact to 4.54 acres, with potential disturbance to fish due to sediment and noise.

**Mitigation:** Amtrak will reduce effects using seasonal work restrictions, noise-reducing tools, and floating or jack-up barges.



### ENDANGERED & THREATENED SPECIES PROTECTIONS

- ▶ **Potential Impacts:** Habitat disruption for tricolored bats, risk to four turtle species from construction effects, and possible sediment and noise impact on sturgeon.

**Mitigation:** Amtrak will use seasonal work restrictions, barriers like cofferdams and curtains, and other protective measures to minimize harm.



### CONTAMINATED MATERIALS & SAFETY MEASURES

- ▶ **Potential Risks:** Disturbance of contaminated soil, sediment, asbestos-containing materials, and lead paint from the existing bridge.

**Mitigation:** Amtrak will conduct Phase II sampling before construction and enforce proper handling, disposal, and safety protocols throughout the process.

# Other Environmental Resources

## KEY BENEFITS OF THE PROJECT



### IMPROVED TRANSPORTATION

- ▶ Reduced rail service delays and increased train speeds over the bridge.
- ▶ Fewer maritime vessel collisions, enhancing overall safety and efficiency.



### SOCIOECONOMIC ADVANTAGES

- ▶ Long-term benefits from enhanced passenger and freight rail service.
- ▶ Significant reducing in delays due to bridge openings contributing to improved economic and logistical operations..



### LAND USE & COMMUNITY IMPACT

- ▶ No impact on development patterns, residences, businesses, zoning, or community facilities—preserving existing neighborhoods.



### VISUAL & AESTHETIC IMPROVEMENTS

- ▶ Enhanced overall appearance of the study area.
- ▶ Removal of transmission towers will improve scenic views.

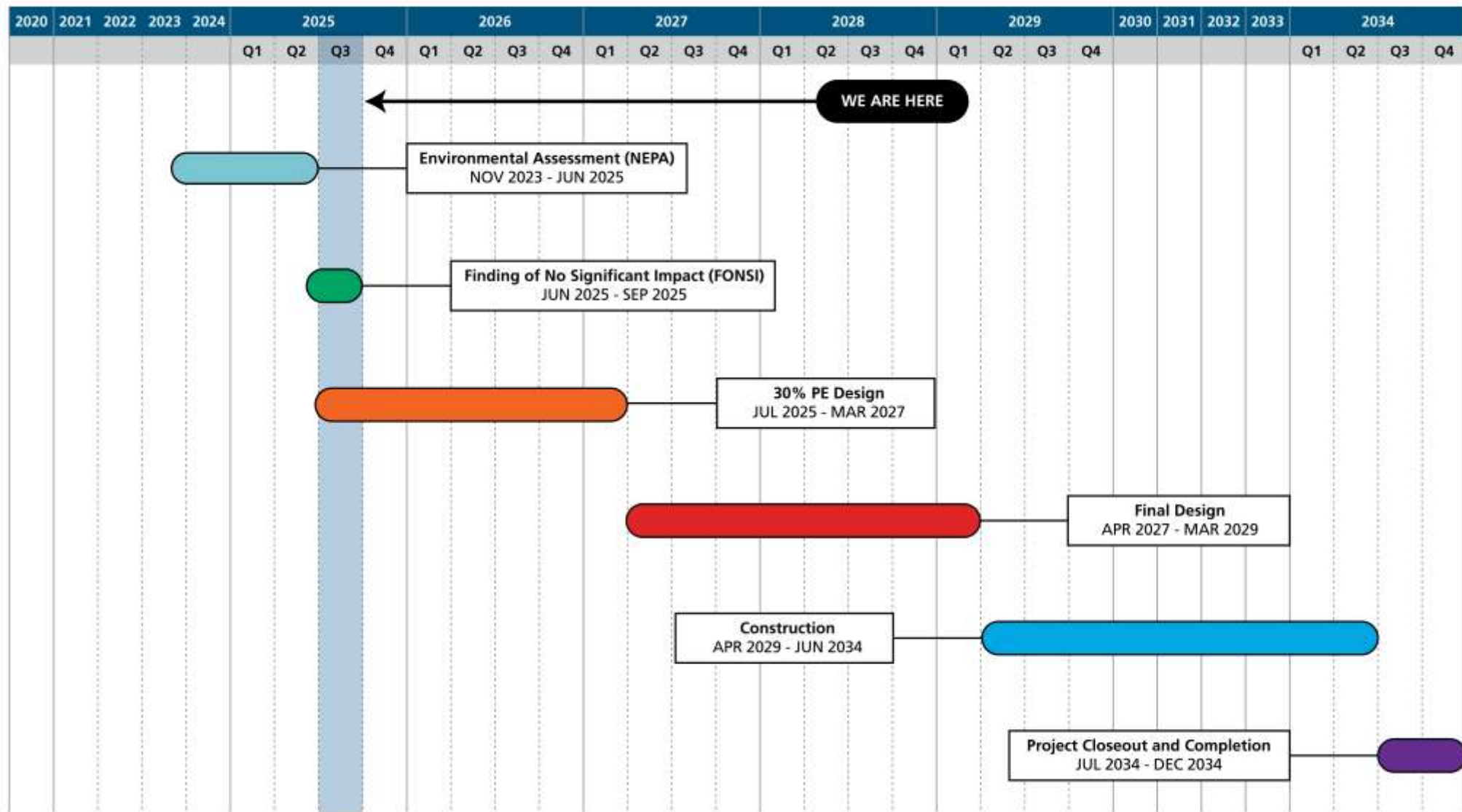


### AIR QUALITY & ENERGY USAGE

- ▶ No significant changes to long-term air pollutant emissions.
- ▶ Negligible impact on energy consumption.



# Timeline





# Next Steps / How to Comment

## *HOW TO COMMENT ON THE ENVIRONMENTAL ASSESSMENT (EA)*

1

**Comment** during tonight's meeting

2

**Submit** comments through [regulations.gov](https://www.regulations.gov)

**SCAN TO SUBMIT  
COMMENTS**

[bit.ly/4kMafoF](https://bit.ly/4kMafoF)



## *Find a Copy Near You: EA Locations*

Bronx Borough President's Office

Pelham Bay Park Administrator's Office

Baychester Library

Pelham Bay Library

Co-Op City at Riverbay Corporation

Community Relations Dept

# Contact



**Amtrak**

PelhamBay@amtrak.com

Or

**FRA – Eric Rothermel,**

FRA Environmental Protection Specialist,  
eric.rothermel@dot.gov



**Amtrak Government Affairs**

Re: Pelham Bay Bridge EA  
Amtrak – Moynihan Train Hall  
383 West 31st Street  
New York, NY 10001

**Federal Railroad Administration**

Eric Rothermel,  
*Environmental Protection Specialist*  
*Environmental Review Division*  
*Office of Environmental Program*  
*Management*

Office of Railroad Development  
Federal Railroad Administration  
1200 New Jersey Avenue, SE  
Washington, DC 20590

## SIGN UP FOR THE PROJECT NEWSLETTER



[bit.ly/Pelham-Bay-Bridge-Newsletter](https://bit.ly/Pelham-Bay-Bridge-Newsletter)

## SCAN TO VISIT OUR WEBSITE



[amtraknewera.com/pelham-bay-bridge/](https://amtraknewera.com/pelham-bay-bridge/)